



TROJAN
CANOPIES

Trade + Fleet Bodies



DESIGNS THAT DELIVER

TROJAN
CANOPIES

Trade Solutions

For fleet managers seeking to streamline operations, reduce costs, and improve service body functionality, Trojan Canopies offers a tailored, scalable solution that doesn't compromise on performance or durability.

Whether you're running 10 vehicles or 200, our nationwide network and battle-tested designs are ready to deliver.



Customer First

Trojan Canopies doesn't just build service bodies. Our gear is built to work as hard as the teams using it.

Known for delivering top-quality, fit-for-purpose builds without the inflated price tags, every product is designed with real-world use in mind. Our trade setups are tough, functional, and backed by a team that actually listens. From day one, collaboration with tradies, fleet managers, and off-roaders has driven the development of products that perform day in and day out.

Here's what sets Trojan apart:

- ✓ **Cost-effective without compromise**
You get premium-grade aluminium builds, minus the premium cost.
- ✓ **Customisation with purpose**
Every fleet operates differently. We ensure setups are matched to real-world use.
- ✓ **Fast, responsive support**
From pre-install questions to after-sales service, support is always on point.
- ✓ **National footprint**
Nearly 20 dealers across Australia provide ongoing support wherever a fleet operates.
- ✓ **Real-world durability**
Designs shaped by feedback from tradies, fleet managers, and off-roaders.

Trojan Canopies is ready to deliver a solution that's not only built for the job, but built for your business.



Inclusions

Trojan's service bodies are configured to suit each team's exacting specifications. The goal remains consistent: **maximise fleet efficiency and support the productivity of the labour force**. Close collaboration with fleet clients ensures each service body is manufactured and tested thoroughly before initiating a broader roll-out program.

General:

- ✓ Provisions for factory sensor and camera relocation.
- ✓ Flush floor opening.
- ✓ Tig welded, marine-grade 5052 aluminium.
- ✓ Pinch seam rubber door seals.
- ✓ Marine-grade stainless steel piano hinges (*plastic version optional*).
- ✓ Cast alloy whale tail compression locks.
- ✓ White or black powdercoat. inside and out.

Interior fit-out:

- ✓ Unistrut frame allowing for modular fit-outs.
- ✓ Interior unistrut on floor, wall and internal roof.
- ✓ Gas strut assisted doors x3.
- ✓ Internal whale tail door lock covers.

Exterior fit-out

- ✓ T-channels welded to roof.
- ✓ Aluminium folded wheel arches.
- ✓ Full-length trundle drawer, with gas strut-assisted lid, optional half length drawer with undermount watertank.
- ✓ Aluminium tapered or square side toolboxes.
- ✓ Tail lights.
- ✓ Trojan Canopies mud flaps.

Optional extras:

- ✓ 5 tier carry case draw system with push locks.
- ✓ 2 tier adjustable shelving unit.
- ✓ 2x deep draws on sliders.
- ✓ Central locking on the three main doors of Service Body, coded to vehicle's fob.
- ✓ Dividing wall, running from front to back.
- ✓ 3x interior LED light strips, wired from start battery.
- ✓ Door ajar kit.
- ✓ Tradesman rack with extension over vehicle's cab and unistrut, including roller.





Featured Inclusions

We have worked hard to ensure standard inclusions on our Chassis Mount Trade Canopies are the best in the industry.

Uni-strut

With unit-strut on the floor, walls and interior ceiling, you can make subtle changes to maximise productivity. Modular and infinite layouts await.

Powdercoating

We use durable powdercoating inside and outside of our canopies. This surface stands up to harsh conditions and provides a polished look.

Roof channels

Make the most of the canopy roof with the included t-channels. Choose a tradie rack with ladder rollers, add some solar panels or go for something more bespoke.

Flush floor

Plywood has its place, but we don't think it's on a canopy floor. We have designed a flush floor on all of our canopies, removing the need for risers or false floors.

Whale tail covers

Our whale tail covers ensure the locking mechanism won't bind on tools, packout cases or materials. Safety orange grab handles included on all canopy doors.

Universal fit

When the vehicle reaches its end of life, you can take the Chassis Mount Canopy with you. The universal fitting system will enable the transfer to all modern utes.



Trundle Drawer

A full-length drawer with heaps of storage. It includes a handy gas strut-assisted lid that doubles as work bench. Comes with 2 whale tail locks as standard.



Underbody Toolbox

These lockable and dust-resistant toolboxes are excellent for stashing items like top-up fluids, extra tools, wet gear, or air compressors.



Seals

We use a combination of pinch seam rubber seals, whale tail compression locks and stainless steel or plastic piano hinges for a watertight and dust-proof seal.



LED Lights

Your choice of lights to suit any standards or requirements. Speak to our team about your options and pricing.



Wheel Arches

Aluminium folded wheel arches with an integrated foot step and grab handle above. These are customised to your vehicle.



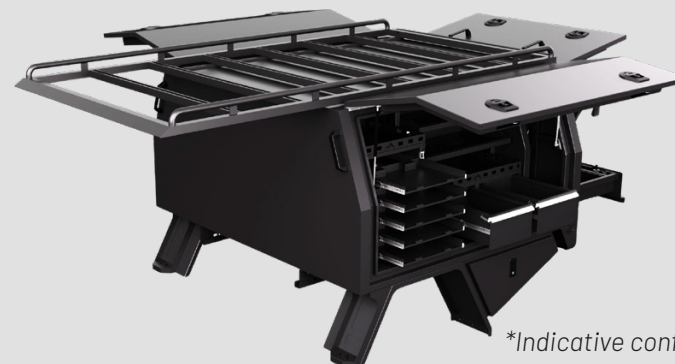
Sensor Provisions

Relocation provisions for reverse camera, sensors and blind-spot monitors. Vehicle specific sensor installation is extra and maintains all factory functionality and safety features.



PASSENGER SIDE

TROJAN
CANOPIES



**Indicative configuration*



DRIVERS SIDE



TROJAN
CANOPIES

**Indicative design*



12V Options

We have a range of 12V packages to keep your team powered up off site. These packages are customisable to suit your exact power and functional requirements.

We utilise components from leading brands with reassuring warranties.

Interchangeable components include:

- ✓ **Lithium batteries** - sizes, capacities and brands.
- ✓ **Inverters** - with optional GPO mounting and install.
- ✓ **Lighting** - remote switching available.
- ✓ **Central locking** - available on main canopy doors.
- ✓ **DC chargers** - specified based on your requirements.
- ✓ **Solar** - panels and controllers.
- ✓ **Power outlets** - USB A/C, cig socket or Anderson.
- ✓ **Monitoring** - hardwired or remote via an app.
- ✓ **Safety** - fuses, master cut-offs and crank battery protection.



Basic 12V

Perfect for keeping tools powered up on site.

Our entry level 12V package can be tucked away in any available space, and uses leading pre-fabricated reliable components.

Unique to this package:

- ✓ Hardkor 12V Power Control Hub
- ✓ Hardkor 1000W Inverter and 40A DC-DC charger
- ✓ Hardkor 135AH Lithium Battery with Bluetooth



Intermediate 12V

Polished, customisable and extendable.

Our most popular 12V package for tradies looking for an integrated look, with easy to access ports, switches and battery monitoring.

Unique to this package:

- ✓ Victron battery monitor and shunt
- ✓ Redarc dual input (DC and solar) charger BCDC1240D
- ✓ Solar input (flush mounted red Anderson plug)



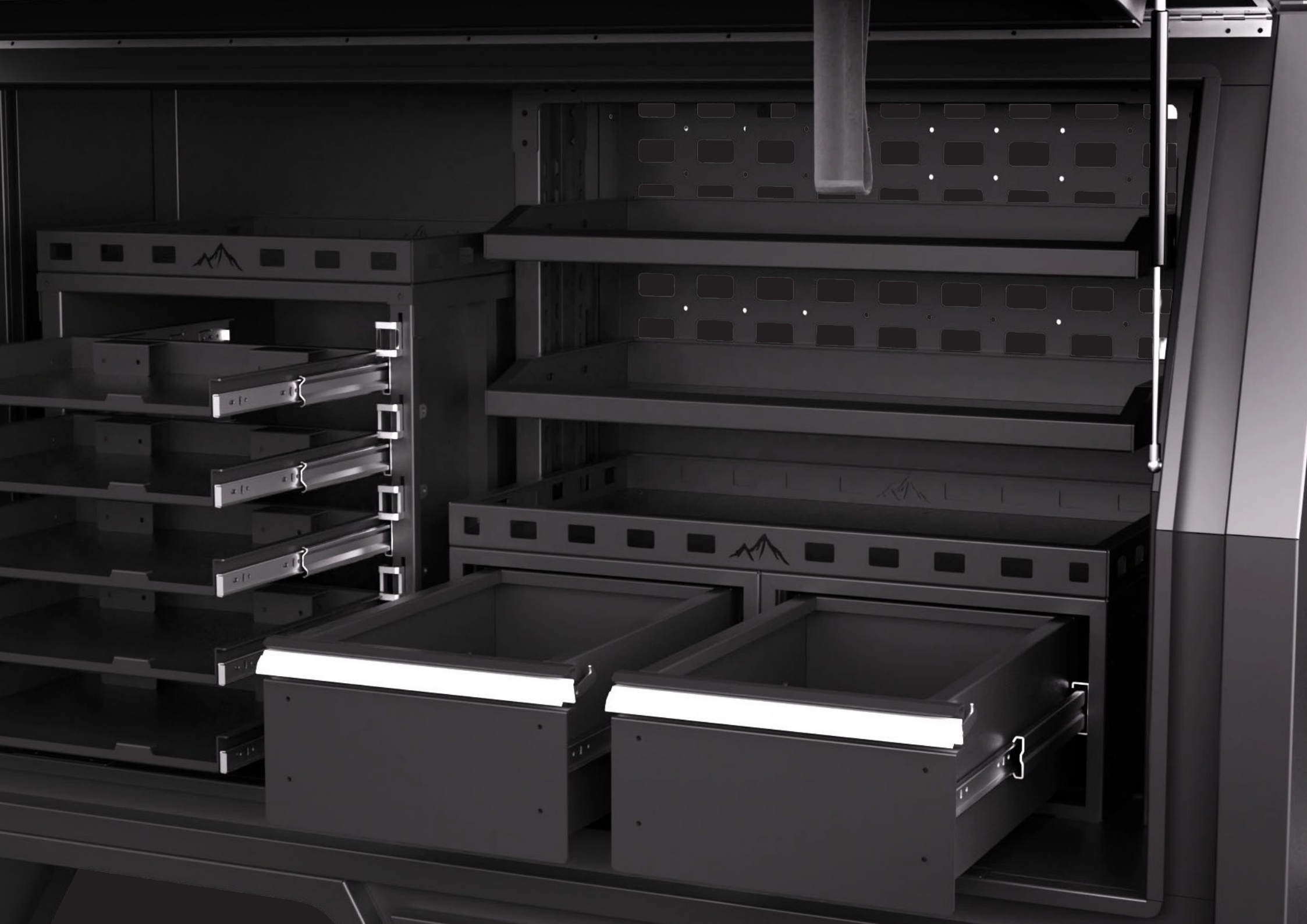
Pro 12V

Smart power control for serious off-grid setups.

This pro-grade 12V package is built for long hauls, remote working, or for workers that need complete visibility and control of their power system.

Unique to this package:

- ✓ Redarc TVMS Rogue RedVision Control Module and display
- ✓ Redarc Manager30 Battery Management System
- ✓ 240v 15A external power charging port





Partnership

Trojan Canopies are committed to forming a long-standing partnership with their fleet clients. In addition to standard terms of trade, Trojan is committed to offer:

Replaceable parts

All components of the service bodies are replaceable, excluding the main body shell. Whether due to accidental damage, wear and tear, or an end-of-life refresh, full support is available to keep the setup in peak condition.

Ready to ship spares

An on-site inventory of spare parts is maintained to streamline repairs and remediation work. This setup allows vehicles to undergo regular servicing and fit-out maintenance simultaneously, helping to minimise downtime.

Access to our extended dealer network

With nearly 20 dealers across the country, Trojan Canopies ensures parts and service are always within reach. Wherever your fleet operates, the dealer network is ready to deliver fast, reliable support.



TROJAN
CANOPIES

Next Steps

Reach out to your dealer to scope your build and to receive an itemised quotation and installation time frames.

We look forward to working with you.

Feel free to reach out on **1300 393 898** or **info@trojancanopies.com.au**.